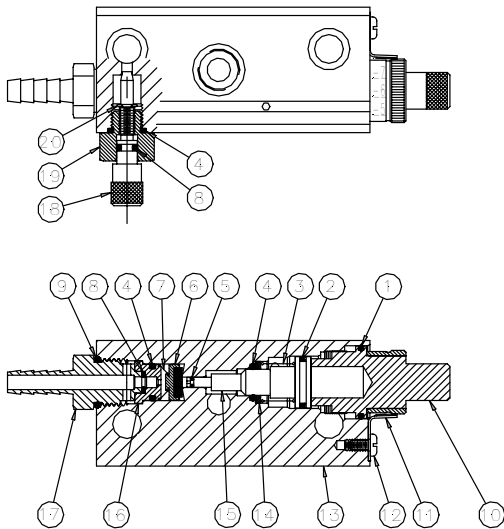


Accu-Lube[®] Application Solution

ALUMINUM PUMP REPAIR KIT Part # 9668



DET	REQ	Kit	Description
1	1	1	O-RING .750 I.D. X .062, VITON
2	1	1	U-CUP ½ I.D. X 1/16, VITON
3	1	1	RETURN SPRING
4	3	3	O-RING .301 I.D. X .070, VITON
5	1	1	O-RING .065 I.D. X .035 VITON
6	1		EVAN VALVE SUB – ASSY.
7	1		CONICAL EVAC. SPRING
8	2	2	O-RING .114 I.D. X .070, VITON
9	1	1	O-RING .426 I.D. X .070, VITON
10	1		LIQUID ADJUSTMENT STEM
11	1		RATCHET CLIP
12	1		6-32 X ¼ PAN SCREW
13	1		PUMP BODY
14	1	1	O-RING RETAINING RING
15	1		1/8" PISTON
16	1		SLEEVE
17	1		BARBED OUTLET FITTING
18	1		AIR ADJUSTMENT STEM
19	1		ADAPTOR
20	1		E-CLIP

Read instructions thoroughly before starting.

Note: The pump repair kit (part9668) is only compatible with Accu-Lube pumps revision K and beyond. To ensure that your Accu-Lube pump is compatible with the repair kit look for a ratcheting clip on the back of your pump (11). Pumps built prior to this revision are not serviceable

Note: the lubricant adjustment stem (10) is calibrated to the individual pump body. Ensure that Lubricant adjustment stem (10) is put back on the original pump body.

1. Disassemble pump & remove all seals from each component.
 - a. Item 20 must be removed to gain access to item 8 in top view.
 - b. Items 11 & 12 must be removed to remove item 10.
 - c. Item 15 is a precision part, handle with extreme care.
 - d. Remove item 10 slowly to prevent item 15 from being damaged. Item 3 will eject item 15 upon removal of item 10.
 - e. Item 14 can not be removed because it has a press fit with item 13.
 - f. Item 16 has a friction fit with item 13. Item 16 must be removed to replace items 4, 6, & 7.
2. Dispose of used seals and springs. (items 1 through 9)
3. Wash remaining components with mineral spirits & allow items to dry.
4. Apply a film of mineral oil to all replacement seals before assembly.
5. Install item 4 in item 13 at item 4.
6. Install items 2 & 5 on item 15.
7. Install item 1 on item 10.
8. In item 13, install item 3 then item 15 and use item 10 to compress item 3 during installation.
9. Install items 11 & 12.
10. Snap item 7 to item 6 and install.
11. Install item 4 on item 16.
12. Install item 16.
13. Install item 8.
14. Install item 9 on item 17.
15. Install item 17. (item 17 can be used to properly locate item 16)
16. Install item 8 on item 18.
17. Install item 18 in item 19.
18. Install item 20 to item 18.
19. Install item 4 on item 19.
20. Install item 19 to item 13.

ITW ROCOL North America

3624 West Lake Avenue, Glenview, Illinois 60026

Tel (800) 452-5823, Tel (847) 657-5359

Fax (800) 952-5823, Fax (847) 657-4897

www.rocolnorthamerica.com